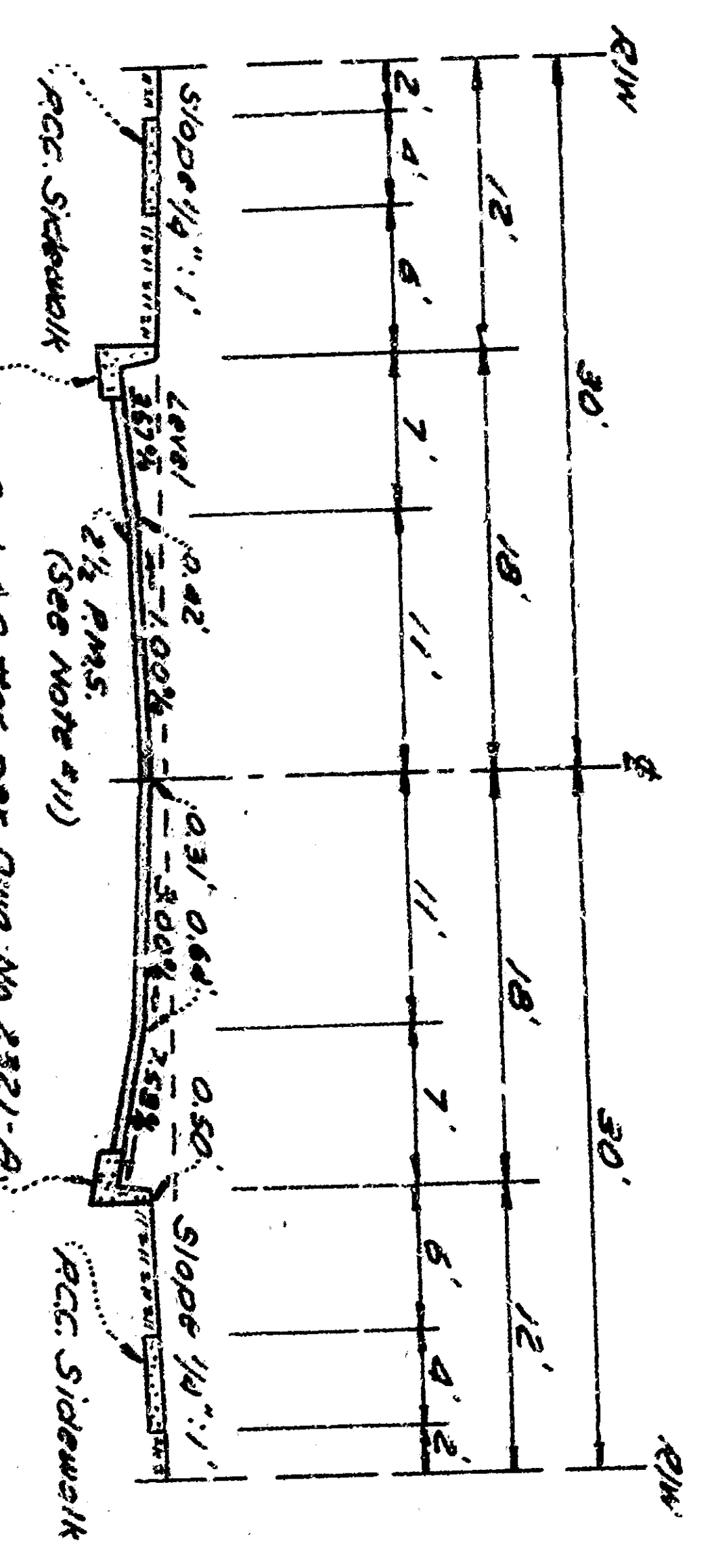
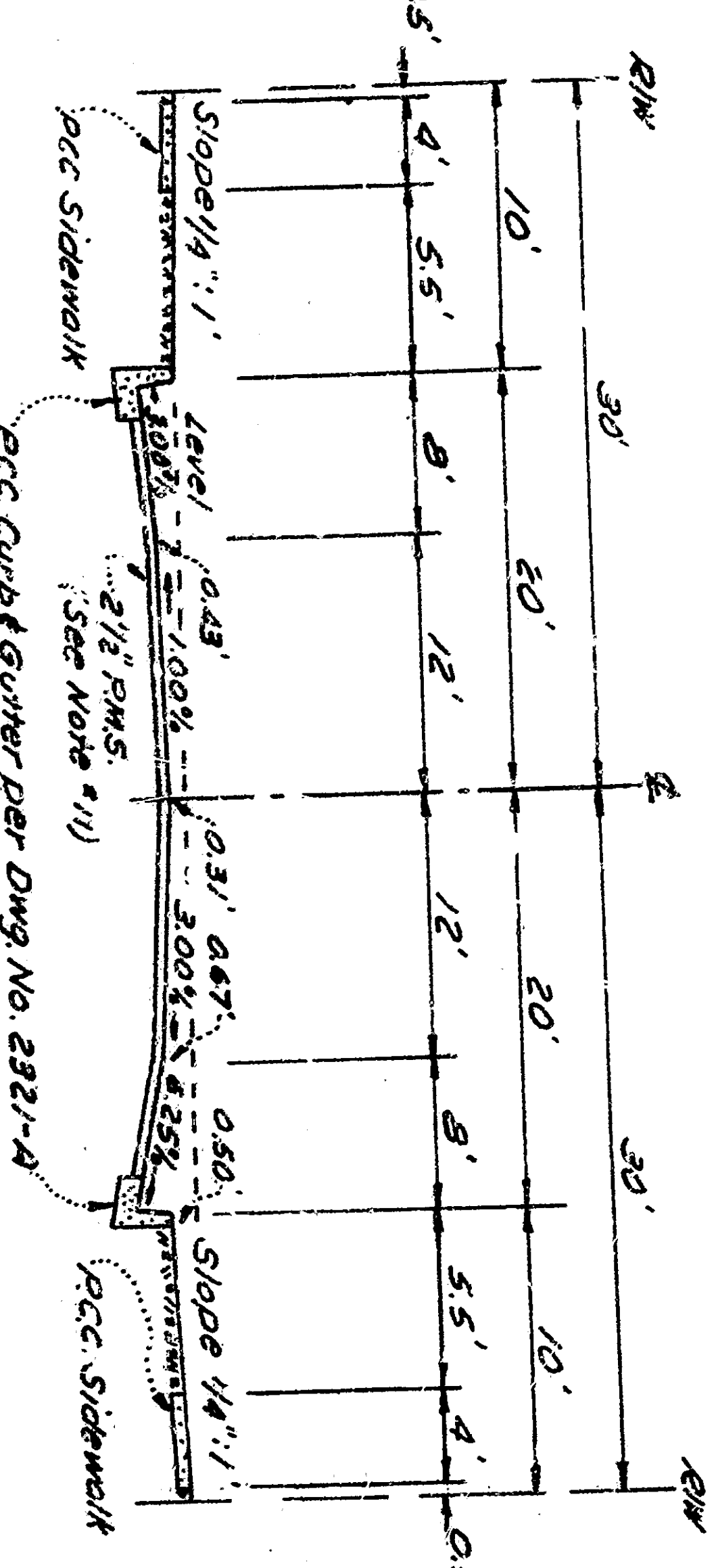


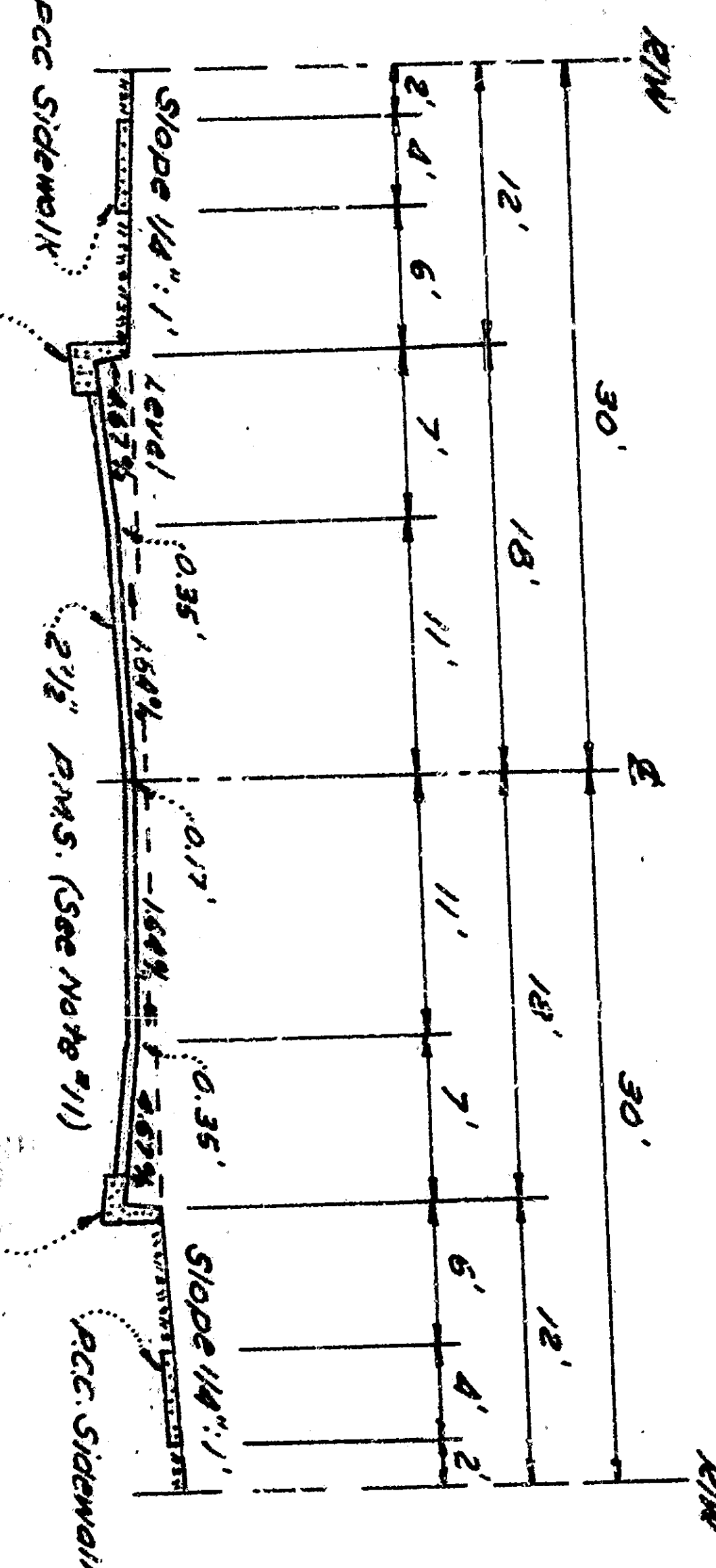
TYPICAL SECTION NO. 1



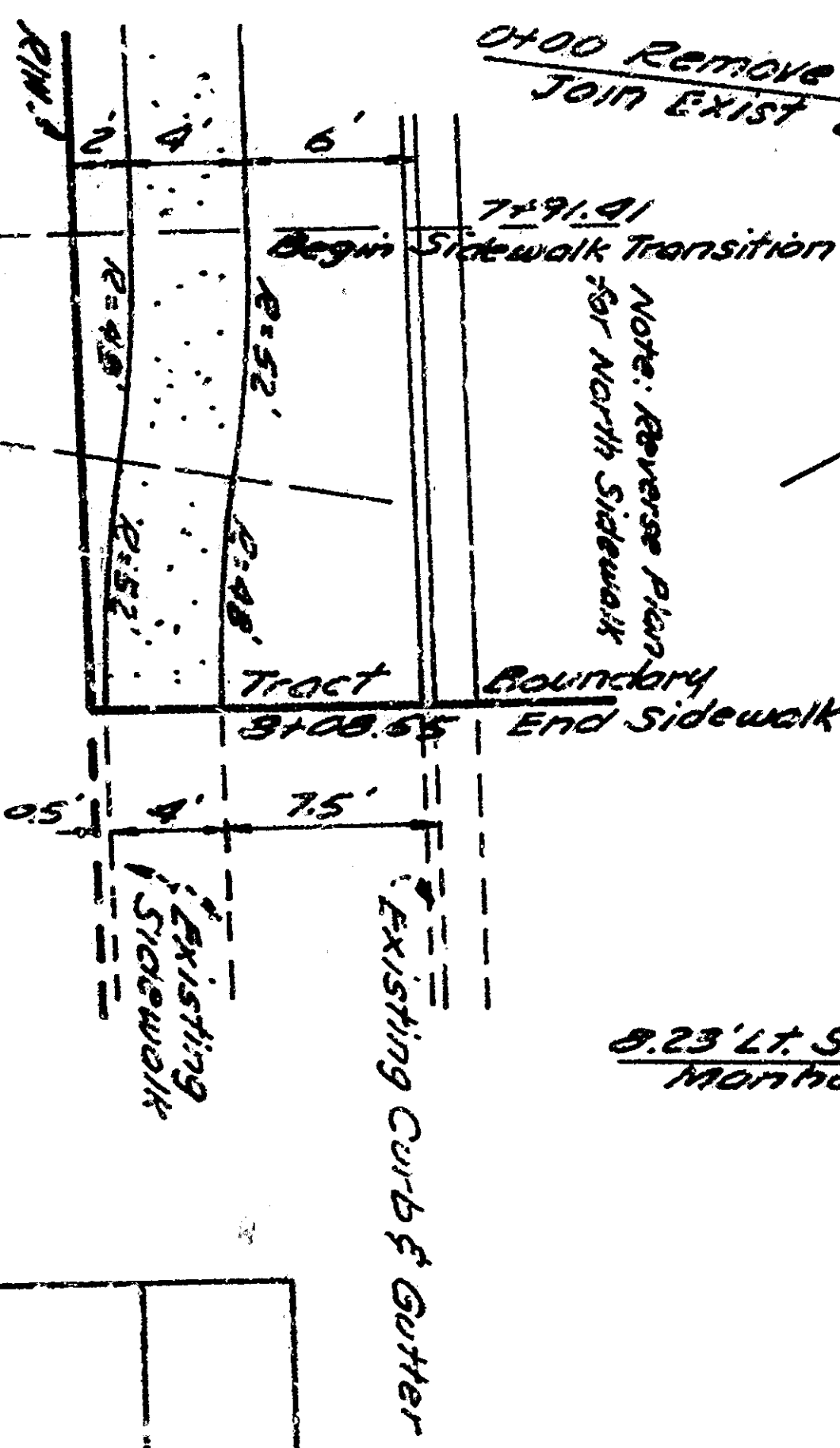
TYPICAL SECTION NO. 2



TYPICAL SECTION NO. 3

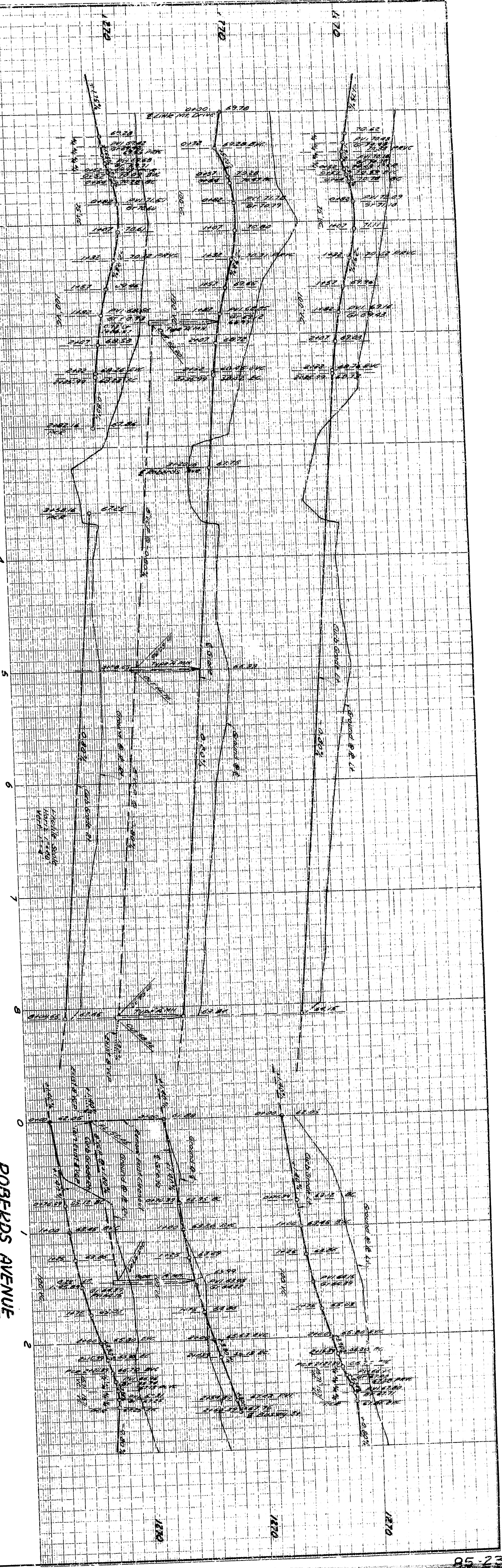
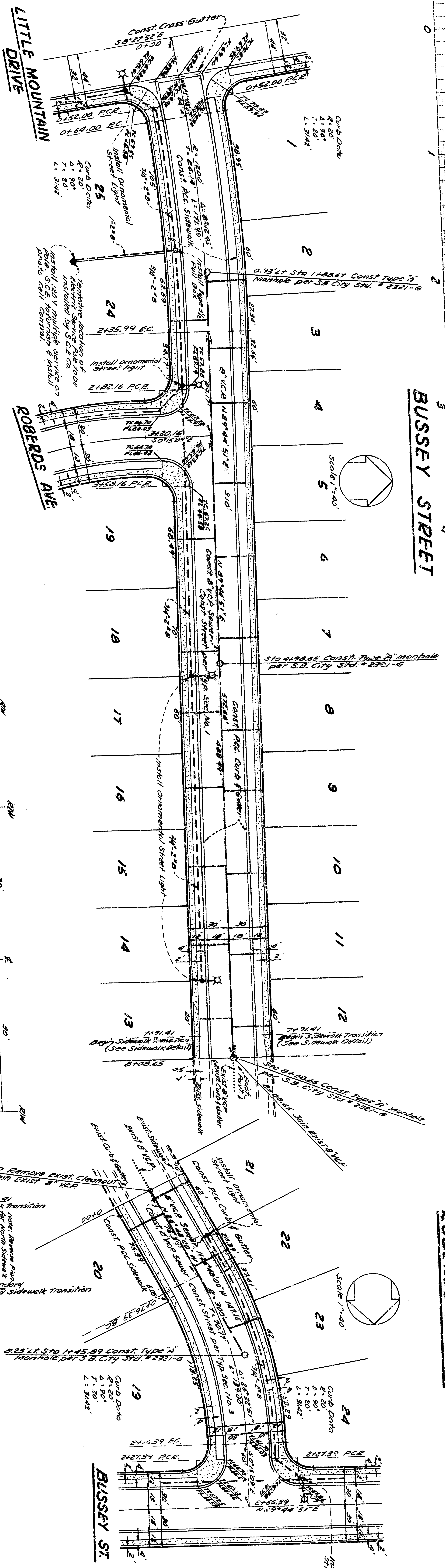


SIDWALK DETAIL

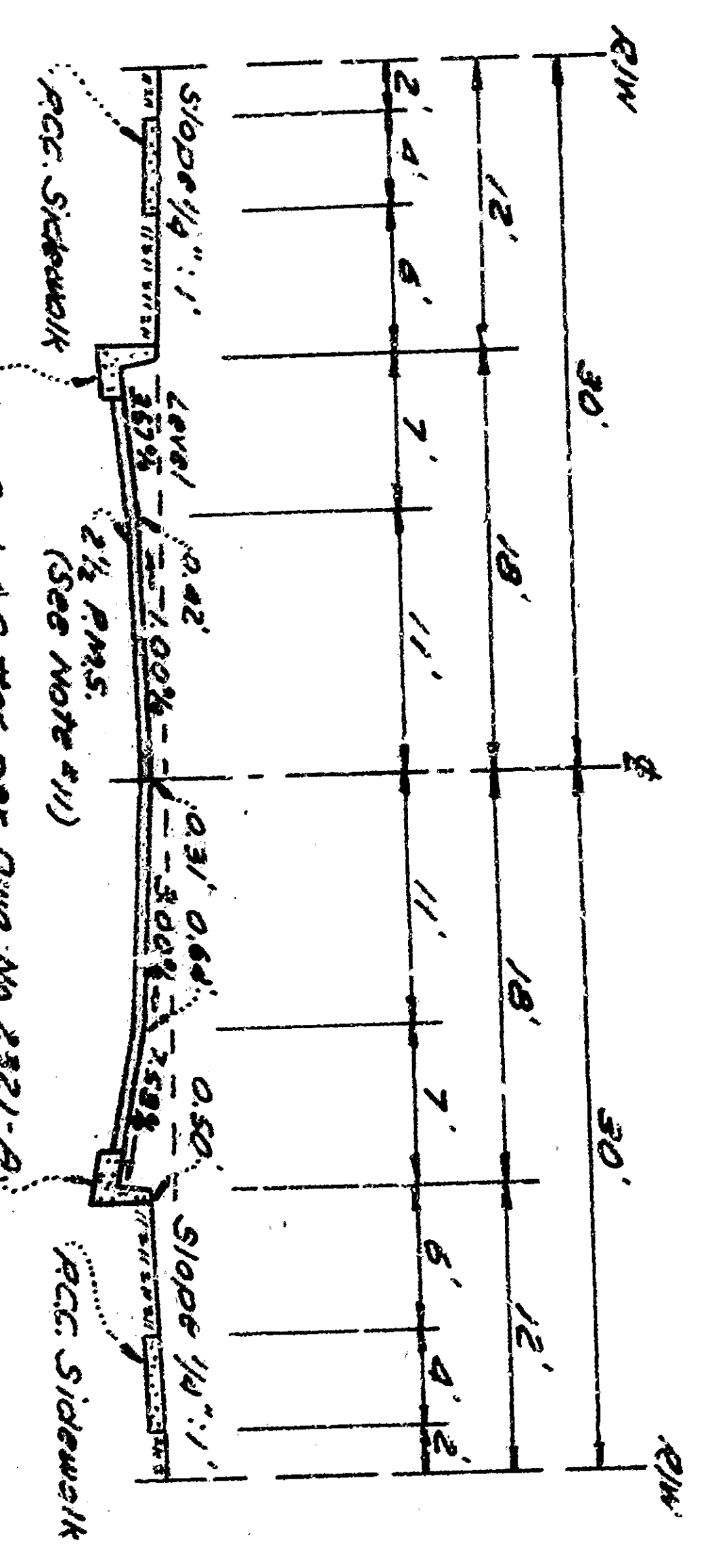


DEPARTMENT OF ENGINEERING
CITY OF SAN BERNARDINO
IMPROVEMENT PLANS
TRACT NO. 6717

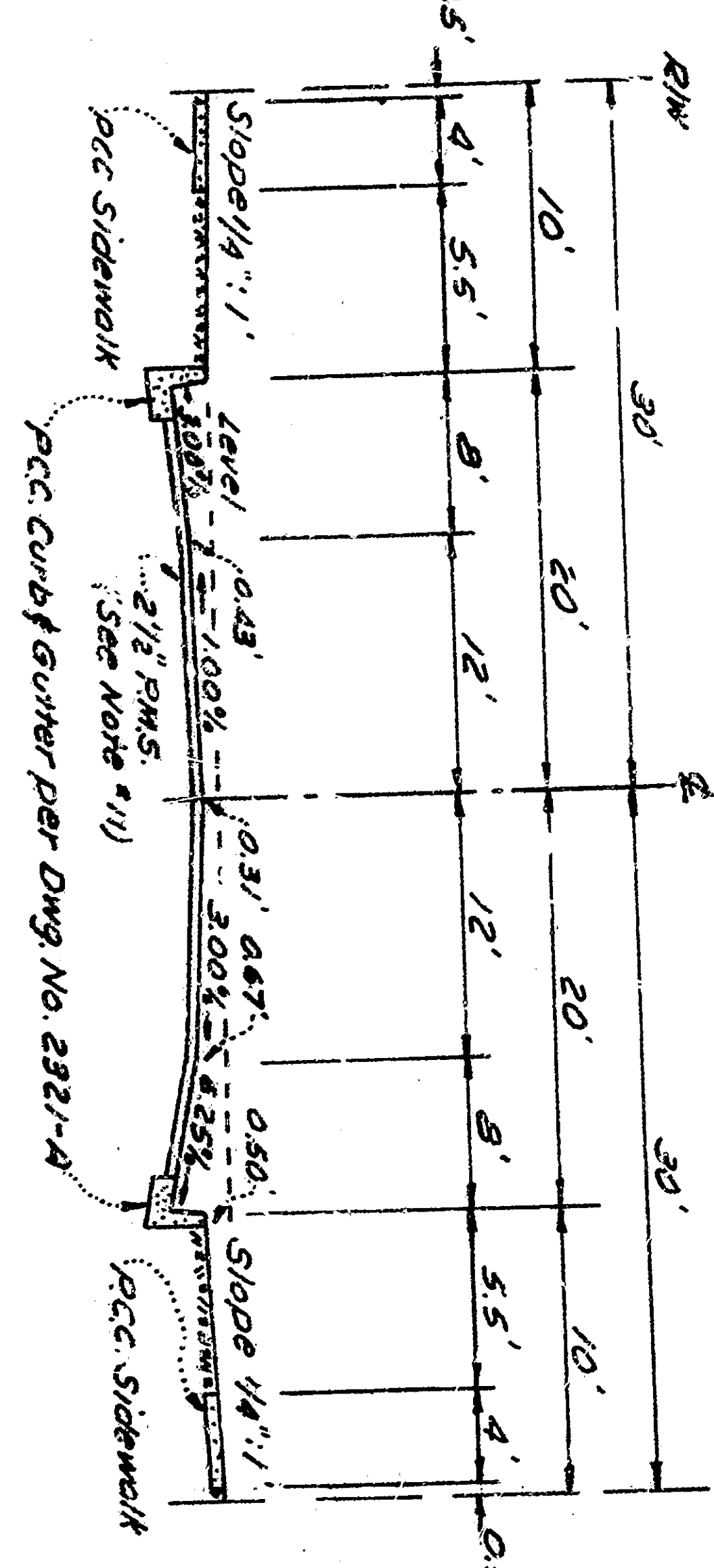
SUBMITTED BY: **CAMARILLI ENGINEERS** REFERENCE: DRAWING NO. 3042
 APPROVED BY: **Michael A. Miller** 1961 DRAWN BY: **[Signature]**
 CHECKED BY: **[Signature]** SHEET 2
 REGISTERED CIVIL ENGINEER NO. 5253



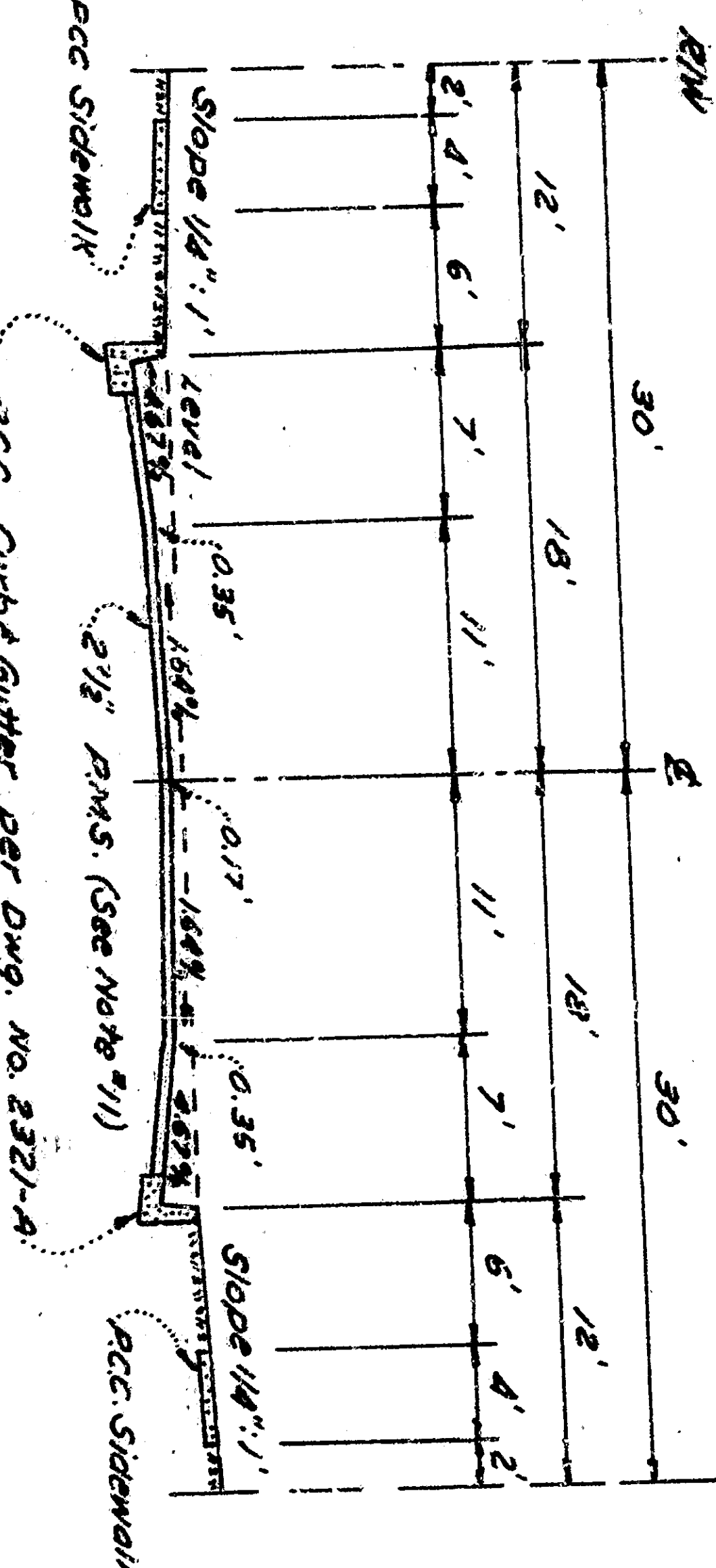
TYPICAL SECTION NO. 1



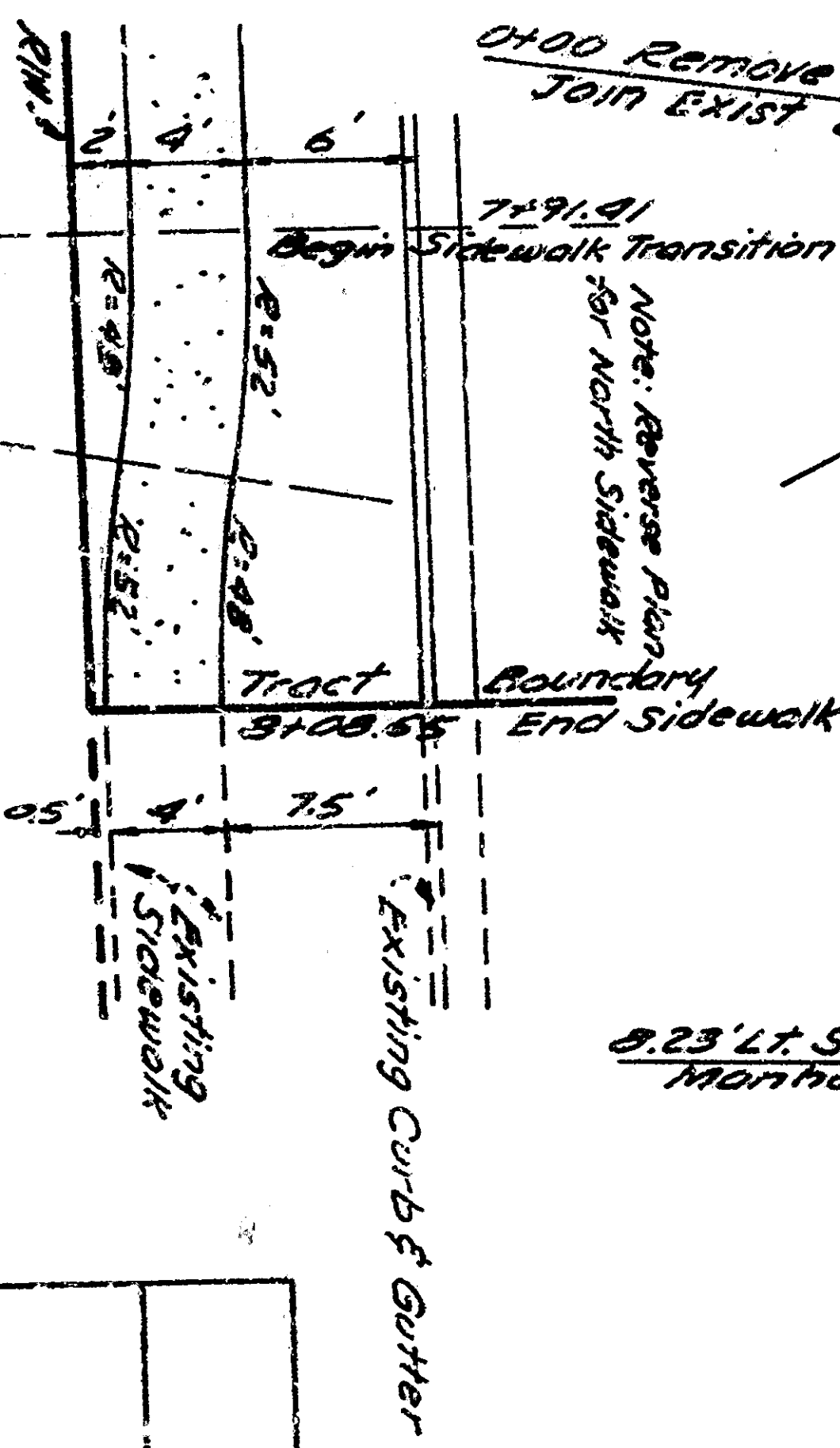
TYPICAL SECTION NO. 2



TYPICAL SECTION NO. 3



SIDWALK DETAIL



DEPARTMENT OF ENGINEERING
CITY OF SAN BERNARDINO
IMPROVEMENT PLANS
TRACT NO. 6717

SUBMITTED BY: **CAMARILLI ENGINEERS**
APPROVED: **Michael A. Miller** 1961
DESIGNED BY: **Michael A. Miller**
CHECKED BY: **Michael A. Miller**
REGISTERED CIVIL ENGINEER NO. 5253

REFERENCE: **DRAIN BY**
DRAWING NO. **5042**
SHEET **2**

